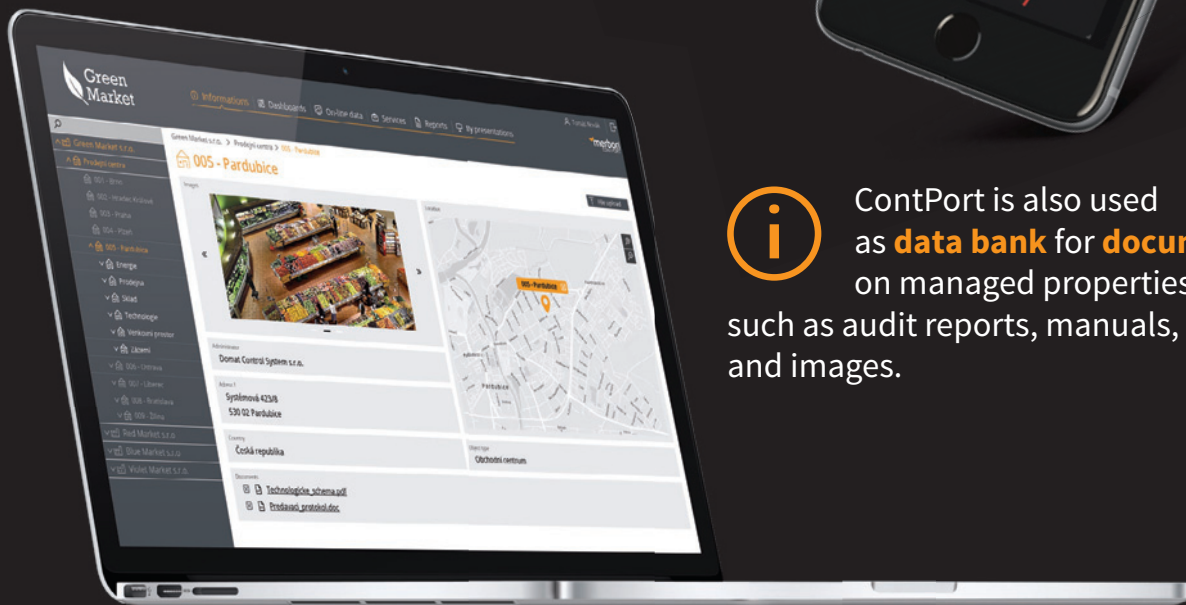


merbon

CONTPORT

Energy management portal

Comprehensive management tool, **cloud solution** available over the web from any device. Helps you and your customers to introduce and control **energy** or **facility management** in your company.

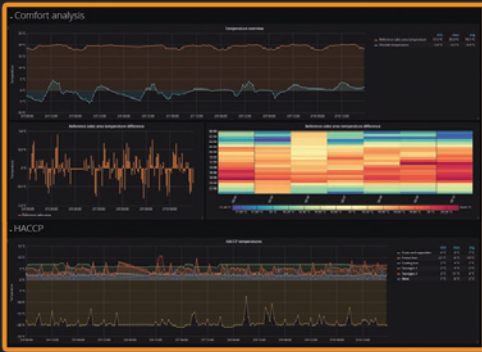


i ContPort is also used as **data bank** for **documents** on managed properties, such as audit reports, manuals, and images.

Energy under control
www.domat.cz



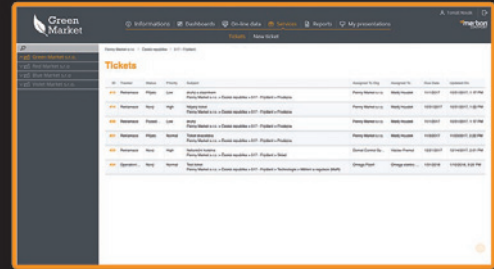
Check your **KPI targets, energy consumptions**, and comfort data.



Enjoy rich **analytic tools** and **customized dashboards**.



Control your **service subcontractors** and internal staff who manage the property.



Compile **user reports** from aggregated data and let them **send by e-mail** automatically.

Domat HMI/SCADA functions

| | merbon VISUAL | merbon SCADA | merbon CONTPOINT |
|--|------------------|-----------------|---------------------|
| Measured values, display and setting | ✓ | ✓ | — |
| SCADA plant graphics | ✓ | ✓ | — |
| Trend data saving | — | ✓ | ✓ |
| Technology alarming | ✓ | ✓ | — |
| Energy alarming | — | — | ✓ |
| Infrastructure management (Business relations, Sites, plants and parts) | — | — | ✓ |
| Dashboards, KPI monitoring | — | — | ✓ |
| Data processing and analysis | — | — | ✓ |
| Reporting | — | — | ✓ |
| Ticketing, service workflow control | — | — | ✓ |

domat
MEMBER OF ČEZ ESCO

Domat Control System s.r.o.

Company Headquarters: U Panasonicu 376, CZ – 530 06 Pardubice – Staré Čívce
Tel.: +420 461 100 823, E-mail: info@domat.cz, products@domat.cz

Training center: Třebízského nám. 424, CZ – 250 67 Klecany
Tel.: +420 222 365 395, E-mail: info@domat.cz

Follow us:   

