

Manual for updating RT to PLC with OS FreeRTOS

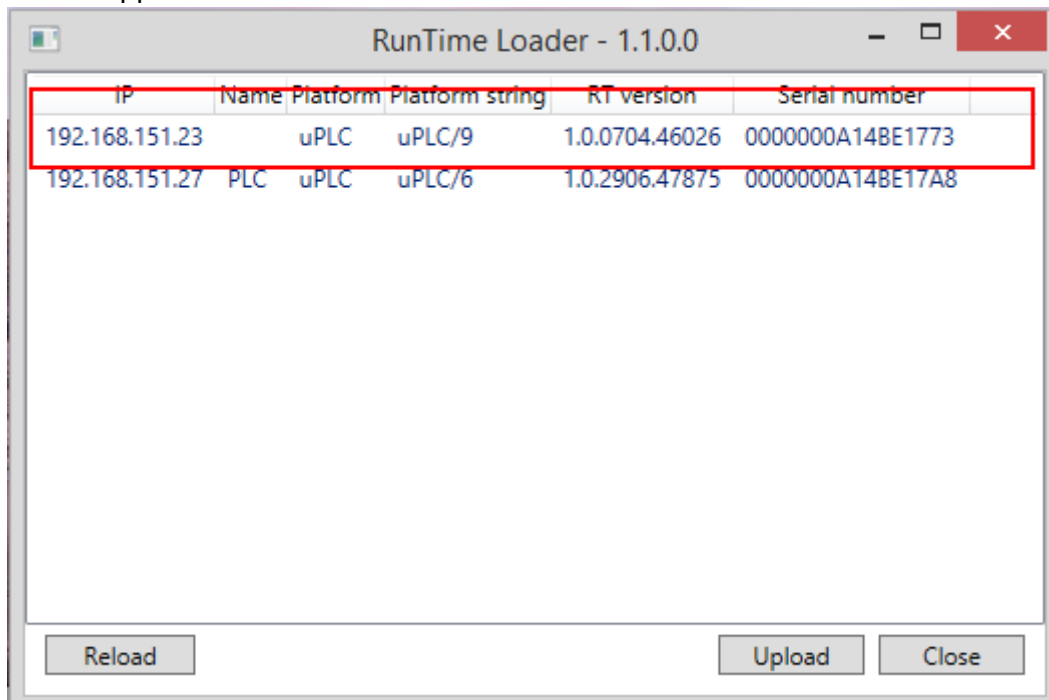
mark100, mark120, mark125, mark150, mark150s, mark150/485, mark150/485s, IMIO100, IMIO105, ICIO200, ICIO205

Manual is prepared for uploading Runtime (hereafter referred to as RT) older than version **1.0.1506.47503** → the rightmost five digit number lower than **47503**.

Before going on, make sure that You have backup of actual project, web definition, LCD definition and network settings of PLC.

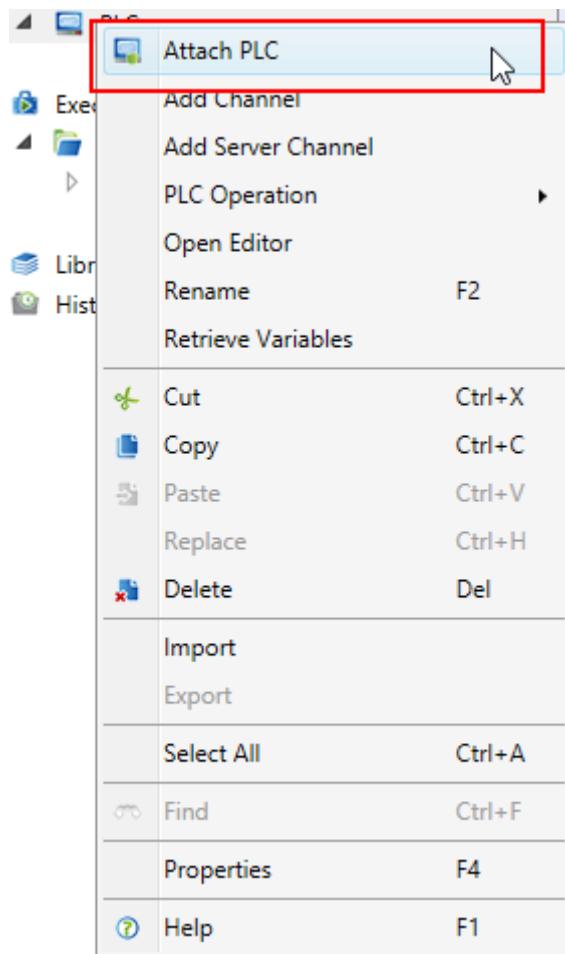
Uploading is supported only for PLCs in local network. Remote uploading is not supported.

1. Run a RunTimeLoader.exe application from RunTimeLoader.zip archive.
 - application detects all PLC in local network

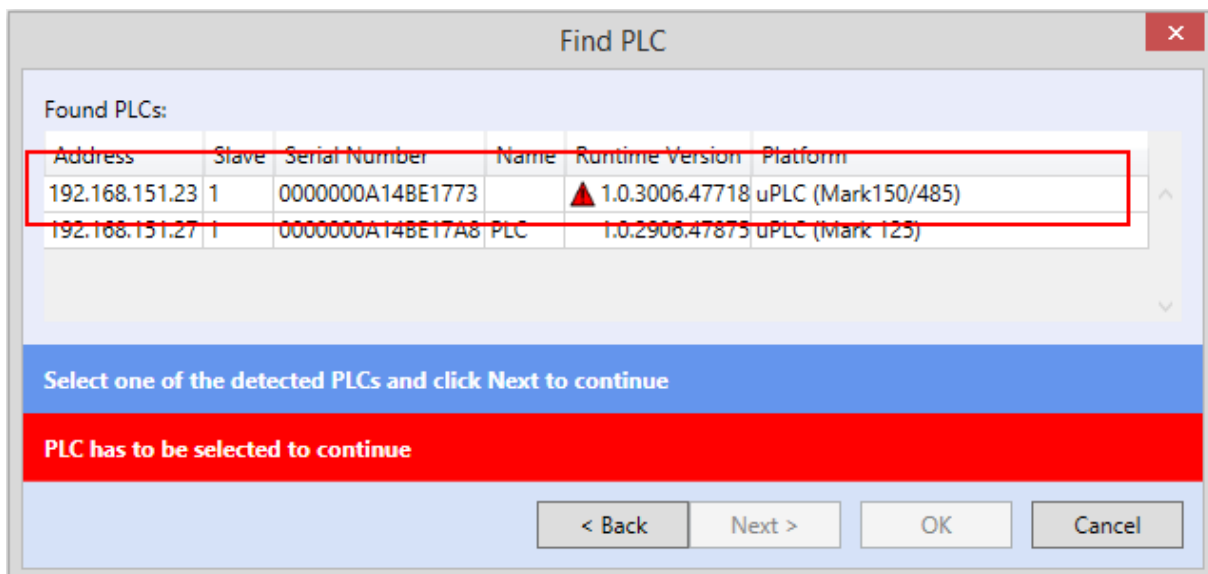


2. Select the PLC You want to upload the RT to and click on „Upload“ button.
 - You'll be asked for Username and Password for RT user „Engineering“
 - default combination is *admin/rw*, but if You've changed them, You need to enter correct combination
 - click on the button „Ok“
3. Then click on button „Reload“. You should find the PLC in the list with RT version **1.0.3006.47718**.
4. Run Merbon IDE version 2.2.0.1.
5. Open existing or create new solution.

6. Continue by attaching PLC – option „Attach PLC“ in context menu of PLC.



7. PLC should be detected with RT 1.0.3006.47718. RT version should be marked with red triangle signaling an old RT version.



8. Select the PLC and click „OK“.

Following steps will erase project, web files and LCD definition files from PLC. PLC network settings will be erased as well. PLC will be set to factory defaults.

IP address: 192.168.1.10

Network mask: 255.255.255.0

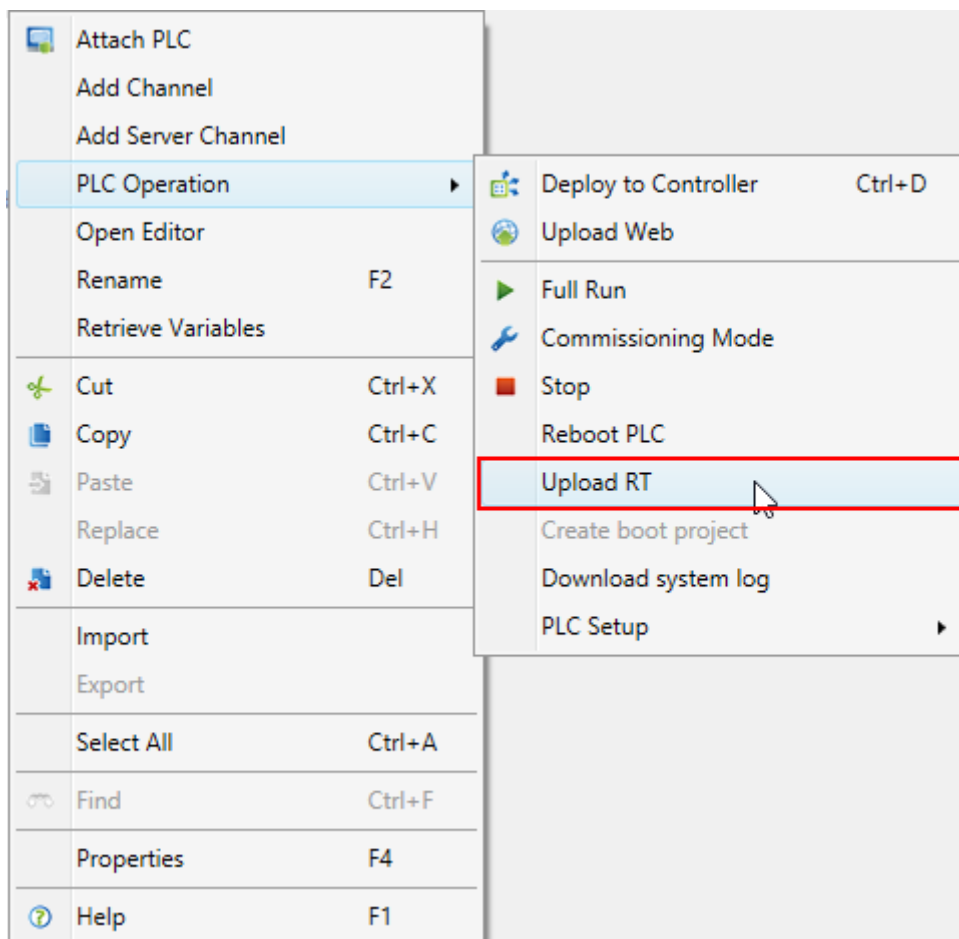
Gateway: 192.168.1.1

DNS: 192.168.1.1

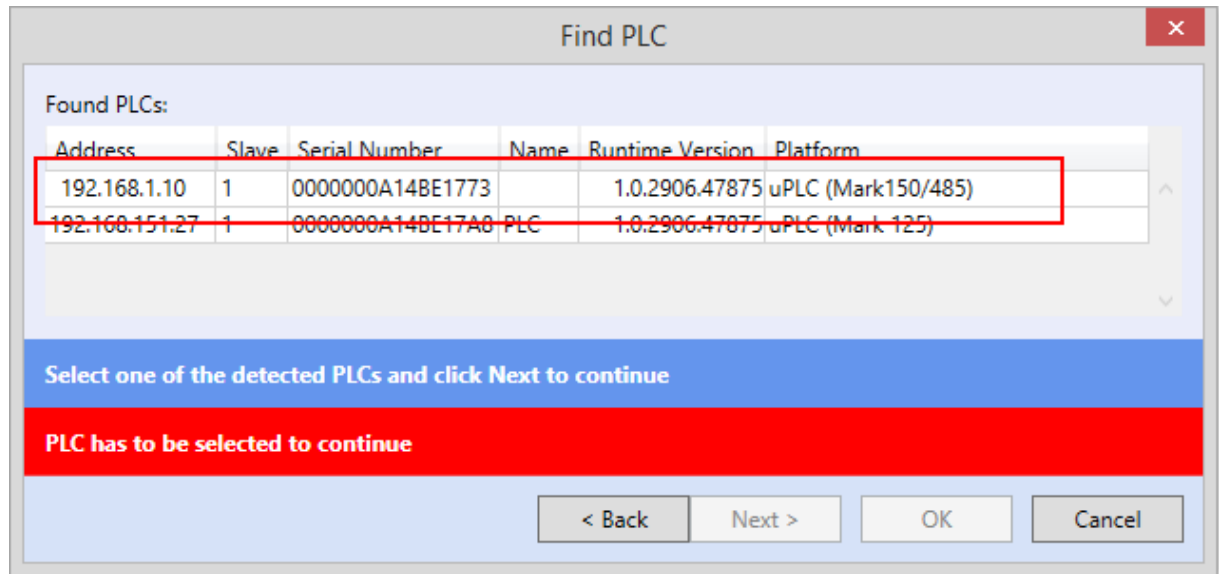
User: admin

Password: rw

9. Click with right mouse button on PLC and in category „PLC operation“ select „Upload RT“.



10. RT will be updated but due to reset of network settings of PLC, in bottom left corner will be information that upload of RT failed. PLC is set to default address, but IDE is waiting for respond on address, that was on PLC before RT update. RT was updated and this will be checked in next step.
11. Attach the PLC the same way as we attached the PLC in step 6. PLC should be detected with RT version 1.0.2906.47875.



12. PLC has now actual RT and is ready to be used.