

merbon

WEB

Merbon Web - Web server right in the PLC

The embedded web server shows web pages created in the **HMI Editor**, which is now integrated in the **Merbon IDE**. Commissioning and remote management are now as easy as never before - just use your **web browser** to completely control the PLC. In the new web server version there are more functions for alarm processing, trending and diagnostics.



Graphic panels

The pages are uploaded to the PLC. They consist of graphic panels with texts, images, buttons, embedded graphs, values, and other objects. As a background, a **technology schema**, floor plan, or any other image may be used. Object transparency can be defined as well. The resolution is definable, so one of the predefined screen sizes or custom definition can be selected. As all data are stored in vector format, the graphics has uniform look even at clients with different screen resolution. The used standard, **HTML 5**, is supported by all current browsers.

Energy under control
www.domat.cz



Enhanced user policy

More users can be defined with different access rights (at Linux-based servers only).



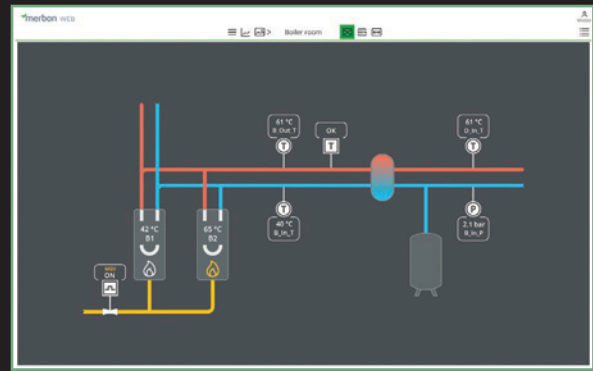
Support of connection to more PLCs

Get overview of your entire building or heat exchange network in your web browser (at Linux-based servers only).



Service web for basic network setup

Generic web pages for setting of IP address and other network properties - excellent for preprogrammed PLCs with customized application.



Boilers room	
Boiler_Out_T	61 °C
Boiler_In_T	40 °C
Distributor_In_T	61 °C
Boiler_In_P	2.1 bar
Distributor	
Distributor_Out_T	55 °C
Time Schedule Program	
Air condition	
Office	
Alarms	



Alarms - list of active alarms and alarm log

Generic alarms overview and alarm history help to more precise problem diagnosis (at Linux-based servers only).

Alarm summary - overview of alarms with corresponding user rights

Fast and simple check of current alarms (at Linux-based servers only).



Trends

Sampling of online values in time, at Linux-based servers also reading of buffered history from a PLC.



System log

List of PLC system events for easy system diagnostics (at Linux-based servers only).

To access more PLCs over one web server use Merbon Web Server for OS Windows with FastCGI server configuration and connection to more PLCs. This topology is suitable for sites where simple and fast view on current values is required. Use Merbon SCADA for functions like long-time trending, event logging and advanced alarm system.

domat

MEMBER OF ČEZ ESCO

Domat Control System s.r.o.

Company Headquarters: U Panasonicu 376, CZ – 530 06 Pardubice – Staré Čívce
Tel.: +420 461 100 823, E-mail: info@domat.cz, products@domat.cz

Training center: Třebízského nám. 424, CZ – 250 67 Klecany
Tel.: +420 222 365 395, E-mail: info@domat.cz

Follow us:

